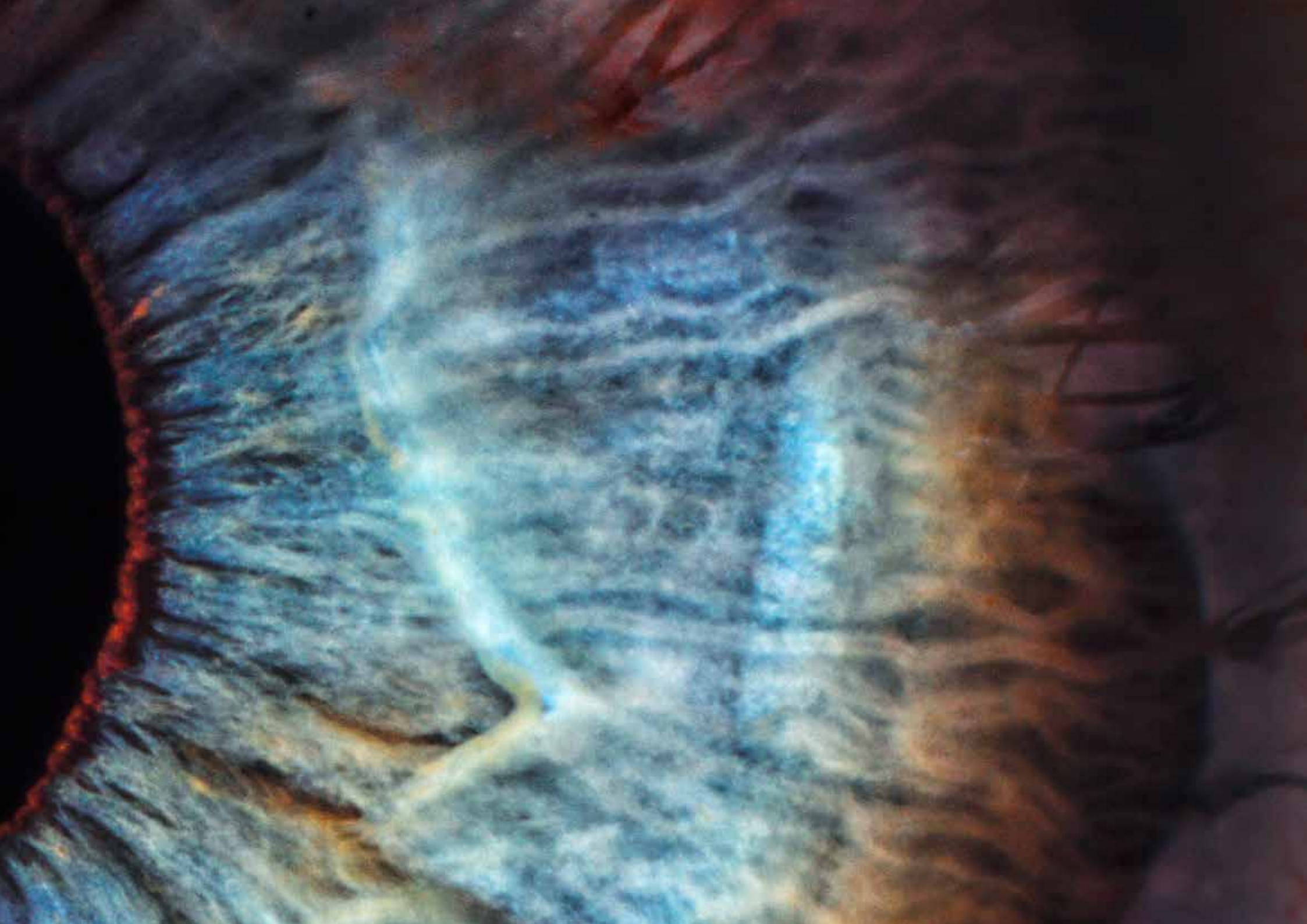


# Ikegami **image**ext

Unsurpassed picture technology and true to life colour rendition meet the demands of medical professionals

TRUE TO LIFE  
IN DETAIL



# MKC-210HD



The MKC-210HD employs 2.1 Mega pixel Full-HD 1/3-inch CMOS sensor to provide 900 lines of high definition video images, and the optimal video quality required for high-end medical video systems.



Recording Board



CCU Mainboard



Camera Head

#### RELATED ITEMS:

IP BOARD | RECORDING BOARD

DUAL FOOT PEDAL | MDR-600HD

MICROSCOPE ADAPTORS WITH C-MOUNT CMA-100HD | CVA-300RI | CFA-200

## 1CMOS Full-HD Medical Grade Ultra Compact Camera

- 1 Chip CMOS progressive Image
- 1/3-inch Full-HD (1920x 1080)
- FPGA based
- High Resolution: Horizontal 900 TV Lines, S/N 50 dB
- High Sensitivity: F7 at 2000 lx
- Ultra Compact Camera Head: W 31 x D 31 x D 36 mm
- Excellent Operability for Use in the Medical Field
- OEM Possibility

#### RATINGS / PERFORMANCE

|                              |                    |  |
|------------------------------|--------------------|--|
| <b>Scanning System</b>       |                    | 1920 x 1080 50/59.94 Progressive   |
| <b>Image Sensor</b>          |                    | 1/3-inch CMOS  |
| <b>Lens Mount</b>            |                    | C-mount  |
| <b>Limiting Resolution</b>   |                    | More than 900 TVL  |
| <b>Sensitivity</b>           |                    | 2000lx F7/3200°K   |
| <b>S/N Ratio</b>             |                    | 50 dB (Gamma/Detail OFF)   |
| <b>GAIN</b>                  |                    | Up to 18 dB  |
| <b>Output Signals</b>        | <b>HDTV</b>        | HD-SDI BNC 2ch<br>DVI(1920x1080 i/p) 1 ch (2 <sup>nd</sup> Output as Option) |
|                              | <b>SDTV</b>        | Composite (VBS) BNC 1 ch<br>S-Video S-Terminal 1 ch                          |
|                              | <b>IP Ethernet</b> | RJ45 1 ch (Option)   |
| <b>SD Card Interface</b>     |                    | Available (IP Ethernet Option Board)   |
| <b>Camera Cable</b>          |                    | 5m or 10m single (selectable depending on the Compositing)                   |
| <b>DC Iris Control</b>       |                    | Available (from CCU)   |
| <b>External Control</b>      |                    | RS-232C 1 ch   |
| <b>Operating Temperature</b> |                    | 0°C to +40°C   |
| <b>Power Requirement</b>     |                    | DC 12V ±10%  |
| <b>Weight</b>                |                    | Camera Head: 60g; CCU: 1.1 kg  |
| <b>Dimensions</b>            |                    | Camera Head: W 31 x H 31 x D 36 mm; CCU: W 170 x H 58 x D 200 mm             |



# MKC-310HD



The MKC-310HD employs 3x 2.1Mega pixel Full-HD 1/3-inch CMOS Sensor to provide 1000 lines of high definition video images through 3G-SDI output interface, coupled with High Sensitivity performance of F10/2000 lux providing the optimal video quality required for special applications.

## 3CMOS Full-HD Medical Grade Camera

- 3 Chip CMOS progressive Image Sensor
- 1/3-inch Full-HD (1920x 1080)
- FPGA based
- High Resolution: Horizontal 1000 TV lines, S/N 54dB
- High Sensitivity: F10 at 2000 lx
- Ultra Compact Camera Head: W34 x H40 x D40 mm
- Digital output: 3G HD-SDI 1080P
- OEM Possibility

### RATINGS / PERFORMANCE

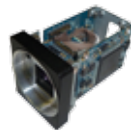
|                              |                    |   |
|------------------------------|--------------------|---|
| <b>Scanning System</b>       |                    | 1920 x 1080 50 / 59.94 Progressive  |
| <b>Image Sensor</b>          |                    | 1/3-inch 3 CMOS   |
| <b>Lens Mount</b>            |                    | C-mount   |
| <b>Limiting Resolution</b>   |                    | 1000 TV Lines   |
| <b>Sensitivity</b>           |                    | 2000lx F10 / 3200°K   |
| <b>S/N Ratio</b>             |                    | 54 dB (Gamma / Detail OFF)  |
| <b>GAIN</b>                  |                    | 0 dB, +6 dB, +12 dB, +18 dB, +24 dB, +30 dB   |
| <b>Output Signals</b>        | <b>HDTV</b>        | 3G/HD-SDI BNC 2 ch<br>DVI (1920x1080 i/p) 1 ch (2 <sup>nd</sup> Output as Option)<br>Genlock BNC 1 ch, Sync Output BNC 1 ch |
|                              | <b>SDTV</b>        | Composite (VBS) BNC 1 ch<br>S-Video S-Terminal 1 ch   |
|                              | <b>IP Ethernet</b> | RJ45 1 ch (Option)  |
| <b>SD card Interface</b>     |                    | Available (IP Ethernet Option Board)  |
| <b>Camera Cable</b>          |                    | 5 m or 7 m single (selectable depending on the Compositing)   |
| <b>DC Iris Control</b>       |                    | Available (from CCU)  |
| <b>External Control</b>      |                    | RS-232C 1 ch  |
| <b>Operating Temperature</b> |                    | 0°C to +40°C  |
| <b>Power Requirement</b>     |                    | DC 12V ±10%   |
| <b>Weight</b>                |                    | Camera Head: 100 g; CCU: 1.1 kg   |
| <b>Dimensions</b>            |                    | Camera Head: W34 x H40 x D40 mm, CCU: W170 x H58 x D200 mm  |



Recording Board



CCU Mainboard



3CMOS Camera Head



1CMOS Camera Head

#### RELATED ITEMS:

- IP BOARD | RECORDING BOARD
- DUAL FOOT PEDAL | MDR-600HD
- MICROSCOPE ADAPTORS WITH C-MOUNT CMA-100HD
- CVA-300RI | CFA-200

# NEW MKC-700HD



## High Definition Medical Image and Video Recorder

- High quality image
- High sensitivity
- Indocyanine Green (ICG) mode
- Full-HD 1920 x 1080 video and still Image Recording
- FTP Server Function for Downloading the File
- Scene Files
- Flip and Turn Function
- Anti-biotic Coating

Ikegami has developed a new high-end medical grade camera which is used for surgical microscope, shadowless lamp, including the operative field camera system. It has a progressive scan Full-HD 3CMOS that can take advantage of a variety of medical situations.

### RATINGS / PERFORMANCE

|                              |                    |  |
|------------------------------|--------------------|--|
| <b>Scanning System</b>       |                    | 1920 x 1080 50/59.94 Progressive                           |
| <b>Image sensor</b>          |                    | 1/3-inch CMOS  |
| <b>Lens Mount</b>            |                    | C-mount  |
| <b>Limiting Resolution</b>   |                    | 1000 TV Lines  |
| <b>Sensitivity</b>           |                    | 2000lx F7/3200°K   |
| <b>S/N</b>                   |                    | 56 dB (Gamma/Detail OFF)                                   |
| <b>GAIN</b>                  |                    | Up to 18 dB  |
| <b>Output signal</b>         | <b>HDTV</b>        | HD-SDI BNC 2ch<br>DVI(1920x1080 i/p) 1ch                   |
|                              | <b>SDTV</b>        | Composite (VBS) BNC 1ch<br>S-Video S-terminal 1ch          |
|                              | <b>IP Ethernet</b> | RJ45 1ch   |
| <b>SD card interface</b>     |                    | Available (IP Ethernet option board)                       |
| <b>Camera cable</b>          |                    | 5m or 10m single (selectable depending on the compositing) |
| <b>DC Iris Control</b>       |                    | Available (from CCU)                                       |
| <b>External Control</b>      |                    | RS-232C 1ch  |
| <b>Operating Temperature</b> |                    | 0°C to +40°C   |
| <b>Power Requirement</b>     |                    | DC 12V ±10%  |
| <b>Weight</b>                |                    | Camera Head: less than 100g; CCU: less than 3kg            |
| <b>Dimensions</b>            |                    | Camera Head: W34 x W40 x D40 mm; CCU W210 x H80 x D270 mm  |



Example of application

#### RELATED ITEMS:

DUAL FOOT PEDAL | MDR-600HD  
MICROSCOPE ADAPTORS WITH C-MOUNT CMA-100HD | CVA-300RI | CFA-200

# NEW MKC-300HD



## 3CMOS Full-HD Medical Grade Camera

- 3CMOS progressive Image Sensor
- 1/3-inch Full-HD (1920x 1080)
- High Resolution: Horizontal 1000 TV Lines, S/N54 dB
- High Sensitivity: F10 at 2000 lx
- Ultra Compact Camera Head: W 34 x H 40 x D 40 mm
- Digital Output: 3G HD-SDI 1080P

The MKC-300HD employs 3x 2.1 Megapixel Full-HD 1/3-inch CMOS Sensor to provide 1000 lines of high definition video images, coupled with High Sensitivity performance of F10/2000 lx providing the optimal video quality required for high-end medical video systems. Signal processing circuitry achieves a high Signal-to-Noise Ratio of 54 dB. Video signal processing is done in the same signal process ASIC as Ikegami's HDTV broadcast cameras to constantly achieve the same high level of quality and reliability.

### RATINGS / PERFORMANCE

|                              |             |   |
|------------------------------|-------------|---|
| <b>Scanning System</b>       |             | 1920 x 1080 50/59.94 Progressive  |
| <b>Image Sensor</b>          |             | 1/3-inch 3CMOS  |
| <b>Lens Mount</b>            |             | C-mount   |
| <b>Camera Output</b>         |             | 2:1 interlace 1080 lines 50/59.94 fields or progressive 720 lines 50/59.94 frames |
| <b>Limiting Resolution</b>   |             | Horizontal: 1000 TV Lines   |
| <b>Sensitivity</b>           |             | F10/2000lx / 3200 °K or better  |
| <b>S/N Ratio</b>             |             | 54 dB (Gamma/Detail off, Y signal)  |
| <b>GAIN</b>                  |             | 0 dB, +6 dB, +12 dB, +18 dB, +24 dB, +30 dB                                       |
| <b>Output Signals</b>        | <b>HDTV</b> | HD-SDI BNC 2 ch   |
|                              |             | Analogue Y, Pb, Pr/RGB D-Sub 1 ch   |
|                              |             | DVI (1920x1080i/p) 1 ch   |
|                              | <b>SDTV</b> | Composite (VBS), BNC 1 ch   |
| S-Video S-Terminal 1 ch      |             |   |
| RGB/Y, Cb, Cr D-Sub 1 ch     |             |   |
| <b>USB Interface</b>         |             | USB 2.0 2 lines (Front/Rear) for Still Picture Capture                            |
| <b>Camera Cable</b>          |             | 5 m or 10 m single, 10 m Extension Cable (maximum length 15 m)                    |
| <b>DC Iris Control</b>       |             | Available (from Camera Head)  |
| <b>Operating Temperature</b> |             | 0°C to +40°C  |
| <b>Power Requirement</b>     |             | AC100V - 240V ±10%  |
| <b>Weight</b>                |             | Camera Head: 100 g or less; CCU: 2500 g or less                                   |
| <b>Dimensions</b>            |             | Camera Head: W 34 x H 40 x D 40 mm; CCU: W 210 x H 80 x D 300 mm                  |



Example of application

#### RELATED ITEMS:

DUAL FOOT PEDAL | MDR-600HD  
 MICROSCOPE ADAPTORS WITH C-MOUNT CMA-100HD | CVA-300RI | CFA-200

# CVA-300RI/CFA-200 CMA-100HD

CVA-300RI



Remote Controller for CVA-300RI

CFA-200



CMA-100HD



## Surgery Microscope Adaptor for MKC Cameras

- High Resolution
- Auto Iris Control
- Bright Optics
- Remote Focus Control Unit

Ikegami has developed a new surgery microscope Adaptor, CVA-300R and CFA-200, for HDTV Camera. They equip cameras with Auto iris function and they perform deeper focal length with Ikegami HDTV Cameras.

| RATINGS / PERFORMANCE |  |                               |                                    |
|-----------------------|--|-------------------------------|------------------------------------|
| LCD Diagonal Size     | CVA-300RI  | CFA-200                       | CMA-100HD                          |
| Suitable sensor size  | 1/3-inch   |                               |                                    |
| Lens Mount            | C-mount  |                               |                                    |
| Focal length          | F = 45-59 mm (Vari-focal)  | F=45 mm type / 59 mm type     | Fixed (f=55mm)                     |
| Iris Power            | DC 12V ± 10%; less than 120mA  | DC12V ±10%, less than 120mA   | N/A                                |
| Focus                 | Remote Focus   | Manual Focus                  | Manual Focus                       |
| Dimensions            | Adaptor: W 132 x H 107 x D 53<br>Focus Remote Box: W 65 x H 135 x D 245 mm<br>(Knobs, Connectors are not included) | Adaptor: W 132 x H 107 x D 53 | Adaptor: W 57.5 x H 55.5 x D 36 mm |
| Weight                | Adaptor: less than 600 g<br>Focus Remote Box: less than 200 g  | Less than 600 g               | Less than 185g                     |

## Surgery Microscope Adaptor for MKC Cameras (Economy Model)

It equips the manual iris and focus control with the fixed focal length but still keeps the optical resolution for Full-HD format.



Example of application



# NEW MDR-600HD



Various type of video signals (SD & HD) can be recorded by simple operation. Reliable simultaneous recording and playback feature on Internal HDD or External USB-device is also available.

**Optional Units:**



Barcode reader



Remote Controller



USB Cardreader



Foot Switch

## High Definition Medical Image and Video Recorder

- Full-HD 1920 x 1080 Video and Still Image Recording
- Multi-Interface
- Built-in LCD Monitor
- Various Search Feature
- Image Data Transfer
- Back-up Power for Momentary Stop

| RATINGS/PERFORMANCE                   |   |                               |             |         |                              |      |                                  |     |                                |    |                                |        |                    |       |  |
|---------------------------------------|---|-------------------------------|-------------|---------|------------------------------|------|----------------------------------|-----|--------------------------------|----|--------------------------------|--------|--------------------|-------|--|
| <b>Internal</b>                       | 2.5-inch HDD (Data Capacity 450 GByte)  |                               |             |         |                              |      |                                  |     |                                |    |                                |        |                    |       |  |
| <b>External</b>                       | USB Drive (Flash Memory or HDD)   |                               |             |         |                              |      |                                  |     |                                |    |                                |        |                    |       |  |
| <b>Display</b>                        | 3.5-inch, Full Colour LCD   |                               |             |         |                              |      |                                  |     |                                |    |                                |        |                    |       |  |
| <b>Input Signals / Output Signals</b> |   |                               |             |         |                              |      |                                  |     |                                |    |                                |        |                    |       |  |
| <b>Video</b>                          | <table border="1"> <tr> <td>Composite</td> <td>1.0Vp-p 75Ω</td> </tr> <tr> <td>S-Video</td> <td>1.0Vp-p 75Ω luminance Signal</td> </tr> <tr> <td>NTSC</td> <td>0.286Vp-p 75Ω chrominance Signal</td> </tr> <tr> <td>PAL</td> <td>0.3Vp-p 75Ω chrominance Signal</td> </tr> <tr> <td>SD</td> <td>SD-SDI NTSC (480i), PAL (576i)</td> </tr> <tr> <td>HD-SDI</td> <td>1080p, 1080i, 720p</td> </tr> <tr> <td>DVI-D</td> <td>640x480 - 1920x1200 (1920x1200 will be reduced to 1728x1080)</td> </tr> </table> | Composite                     | 1.0Vp-p 75Ω | S-Video | 1.0Vp-p 75Ω luminance Signal | NTSC | 0.286Vp-p 75Ω chrominance Signal | PAL | 0.3Vp-p 75Ω chrominance Signal | SD | SD-SDI NTSC (480i), PAL (576i) | HD-SDI | 1080p, 1080i, 720p | DVI-D | 640x480 - 1920x1200 (1920x1200 will be reduced to 1728x1080) |
| Composite                             | 1.0Vp-p 75Ω   |                               |             |         |                              |      |                                  |     |                                |    |                                |        |                    |       |  |
| S-Video                               | 1.0Vp-p 75Ω luminance Signal  |                               |             |         |                              |      |                                  |     |                                |    |                                |        |                    |       |  |
| NTSC                                  | 0.286Vp-p 75Ω chrominance Signal  |                               |             |         |                              |      |                                  |     |                                |    |                                |        |                    |       |  |
| PAL                                   | 0.3Vp-p 75Ω chrominance Signal  |                               |             |         |                              |      |                                  |     |                                |    |                                |        |                    |       |  |
| SD                                    | SD-SDI NTSC (480i), PAL (576i)  |                               |             |         |                              |      |                                  |     |                                |    |                                |        |                    |       |  |
| HD-SDI                                | 1080p, 1080i, 720p  |                               |             |         |                              |      |                                  |     |                                |    |                                |        |                    |       |  |
| DVI-D                                 | 640x480 - 1920x1200 (1920x1200 will be reduced to 1728x1080)  |                               |             |         |                              |      |                                  |     |                                |    |                                |        |                    |       |  |
| <b>Audio</b>                          | - 8 dBs 10 kΩ or more, unbalance SDI Video Input Terminal   |                               |             |         |                              |      |                                  |     |                                |    |                                |        |                    |       |  |
| <b>LAN</b>                            | RJ45 (100Base-TX/1000Base-T)  |                               |             |         |                              |      |                                  |     |                                |    |                                |        |                    |       |  |
| <b>USB-A</b>                          | Recording x 2 (Front USB 2.0)   |                               |             |         |                              |      |                                  |     |                                |    |                                |        |                    |       |  |
| <b>USB-B</b>                          | For PC Connection x 1 (Rear USB 2.0)  |                               |             |         |                              |      |                                  |     |                                |    |                                |        |                    |       |  |
| <b>Remote</b>                         | 2.5-inch Mini-Jack  |                               |             |         |                              |      |                                  |     |                                |    |                                |        |                    |       |  |
| <b>Contact Switch</b>                 | 3.5-inch Mini-Jack, Video x 1, Photo x 1  |                               |             |         |                              |      |                                  |     |                                |    |                                |        |                    |       |  |
| <b>USB Drive</b>                      | Flash Memory or HDD   |                               |             |         |                              |      |                                  |     |                                |    |                                |        |                    |       |  |
| <b>Format</b>                         | FAT32   |                               |             |         |                              |      |                                  |     |                                |    |                                |        |                    |       |  |
| <b>Still Image</b>                    | JPEG  |                               |             |         |                              |      |                                  |     |                                |    |                                |        |                    |       |  |
| <b>Video Compression</b>              | MPEG-4 AVC/H.264  |                               |             |         |                              |      |                                  |     |                                |    |                                |        |                    |       |  |
| <b>File Format</b>                    | mov   |                               |             |         |                              |      |                                  |     |                                |    |                                |        |                    |       |  |
| <b>Recording Time</b>                 | 90 hours. Internal HDD: 500GB, EQ: Economy Quality  |                               |             |         |                              |      |                                  |     |                                |    |                                |        |                    |       |  |
| <b>Compression</b>                    | LPCM  |                               |             |         |                              |      |                                  |     |                                |    |                                |        |                    |       |  |
| <b>Sampling Freq.</b>                 | 48 KHz  |                               |             |         |                              |      |                                  |     |                                |    |                                |        |                    |       |  |
| <b>Quantifying Bit Number</b>         | 16-Bit  |                               |             |         |                              |      |                                  |     |                                |    |                                |        |                    |       |  |
| <b>Power</b>                          | AC 100V - 240V ±10% 50/60 Hz 0.62 A - 0.35 A  |                               |             |         |                              |      |                                  |     |                                |    |                                |        |                    |       |  |
| <b>Operating Environment</b>          | <b>Temperature</b>  | 5°F to 40°F (32°F to 104°F)   |             |         |                              |      |                                  |     |                                |    |                                |        |                    |       |  |
|                                       | <b>Humidity</b>   | 5% to 80% RH (non-condensing) |             |         |                              |      |                                  |     |                                |    |                                |        |                    |       |  |
| <b>Dimension</b>                      | 210.5W x 88.5H x 235D mm (incl. rubber foot)  |                               |             |         |                              |      |                                  |     |                                |    |                                |        |                    |       |  |
| <b>Weight</b>                         | 2.6 kg (5.7 lbs)  |                               |             |         |                              |      |                                  |     |                                |    |                                |        |                    |       |  |
| <b>Accessories</b>                    | Power Cord x 1 Instruction Manual (with Warranty)   |                               |             |         |                              |      |                                  |     |                                |    |                                |        |                    |       |  |

# MLW-3225C/-3D



MLW-3200C series are large Widescreen 32-inch LCD Monitors with the high resolution 1920 (H) x 1080 (V) Full-HD LCD Panel, 1 Billion colour graduation (10-bit x 3-Colour) and wide angle of 178 degrees. MLW-3225C-3D is the latest development for surgical operation 3D monitoring systems

## 32-inch HDTV/SDTV Multi-Format LCD Colour Monitor / 32-inch 3D HDTV/SDTV Multi-Format LCD Colour Monitor

- Fully compliant with medical safety directives
  - High Resolution, True Colour Displays
  - 32-inch Widescreen Full-HD LCD Panels 1920 (H) x 1080 (V) Pixel
  - Jaggy-less I/P Conversion Process
  - Multiple Input and Format Capabilities
  - Various Gamma Characteristics
  - Display Power Management Function
  - Anti-Reflection Hard Coat Screen
  - Dual Display Function
  - Maximum 30 Meters Length of DVI-D Cable available
  - Strong, rugged construction, but light in weight
- MLW-3225C-3D Additional Features**
- Passive 3D with Xpol@Polarization Filter
  - Built-in 3D Composer, Dual Inputs Interface (HD-SDI 2 ch)
  - Switchable between 2D and 3D

#### RELATED ITEMS:

TS-321 DESKTOP STAND | M-RGB3

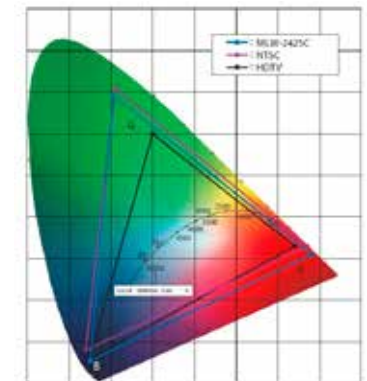
# MLW-2422C/MLW-2425C



The MLW-2400C series are Multi-Format 24-inch LCD Monitors for specialist applications where high quality picture and true colour rendition with wide colour gamut are needed.

## 24-inch HDTV/SDTV Multi-Format LCD Colour Monitor 24-inch HDTV/SDTV Multi-Format Dual Display LCD Colour Monitor

- Fully compliant with medical safety directives
- Wider colour gamut than EBU/AMPTE standard (102% NTSC)
- High Resolution, True Colour Displays (1.06 Billion Colour gradient)
- Very wide view Angle
- Jaggy-less I/P Conversion Process
- Multiple Input and Format Capabilities
- Various Gamma Characteristics
- Display Power Management Function
- Dual Display Function (MLW-2425C)
- Maximum 30 meters length of DVI-D cable available
- Anti-Reflection hard coat Screen



#### RELATED ITEMS:

TS-261 DESKTOP STAND | M-RGB3

# MLW-2623C-DC



Bottom / side connectors

MLW-2623C-DC is a large wide screen 26-inch LCD monitor with single input and with high resolution 1920 (H) x 1080 (V) Full HD LCD panel, 1.06 Billion colour graduation (10-Bit x 3-Colour) and wide angle of 178 degrees.

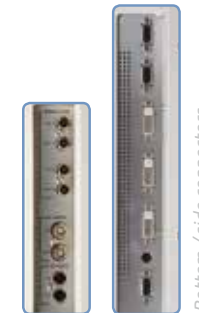
## 26-inch HDTV/SDTV Multi-Format LCD Colour Monitor

- Fully compliant with medical safety directives
- High Resolution, True Colour Display (1.06 Billion Colour gradient)
- 26-inch Widescreen Full-HD LCD Panel 1920(H)x1080(V) Pixel
- Jaggy-less I/P Conversion Process
- LED black light panel helps saving power
- Up to 8 colour presets can be saved
- Max. 30 meters length of DVI-D cable available
- Anti-Reflection hard coat Screen

**RELATED ITEMS:**

TS-261 DESKTOP STAND | M-MSDI3

# MLW-2626C-DC



Bottom / side connectors

MLW-2626C-DC is a large wide screen 26-inch LCD monitor with dual input and with high resolution 1920 (H) x 1080 (V) Full HD LCD panel, 1.06 Billion colour graduation (10-Bit x 3-Colour) and wide angle of 178 degrees.

## 26-inch HDTV/SDTV Multi-Format LCD Colour Monitor

- Fully compliant with medical safety directives
- High Resolution, True Colour Display (1.06 Billion Colour gradient)
- 26-inch Widescreen Full-HD LCD Panel 1920 (H) x 1080 (V) Pixel
- Jaggy-less I/P Conversion Process
- Multiple Input and Format Capabilities
- Up to 8 colour presets can be saved
- Dual Display Function
- LED black light panel helps saving power
- Maximum 30 meters length of DVI-D cable available
- Anti-Reflection hard coat Screen
- Strong, rugged construction, but light in weight

**RELATED ITEMS:**

TS-261 DESKTOP STAND

**PRELIMINARY**

## MLW-2400 SERIES



WITH WIDE  
COLOUR SPACE  
PANEL

## MLW-2400 Series

- Fully compliant with medical safety directives
- New Full Flat design for Front panel
- New IPS panel with LED backlight
- 1 Billion Full Colour Gradient
- High brightness pictures
- Wider colour space display mode
- Low power consumption



Example of application

**PRELIMINARY**

## MLW-2600 SERIES



2D / MULTI-3D  
DISPLAY

## MLW-2600 Series

- Fully compliant with medical safety directives
- New Full Flat design for Front
- New IPS panel with LED backlight
- 1 Billion Full Colour Gradient
- High brightness pictures
- 3D display available optionally for multi 3D signal format
- Low power consumption



# MLM-1581CH



Bottom / side connectors

The MLM-1581CH is a Multi-Format 15 -inch LCD Monitor for easy operation with higher performance.

## 15-inch HDTV/SDTV Multi-Format LCD Colour Monitor

- Fully compliant with medical safety directives
- Strong, rugged construction, but light in weight
- High Resolution faithful Colour Reproduction
- High Performance from New Digital Process Engine
- Very wide View Area with High Contrast
- Various Gamma Characteristics
- LSD Protection Panel (Option)

# MLW-2150HD



Bottom connectors

The MLW-2150HD is a medical grade Full -HD LED Monitor with 3G/HD-SDI and HDMI interface. MLW-2150HD is ideal for HD video monitoring or PC applications. With a VESA interface it can be easily racked, wall-mounted or used as a desktop.

## 21.5-inch Full-HD 3G Multi-LED Monitor

- Fully compliant with medical safety Directives
- 21.5-inch Full-HD 3G Multi-Format LED Monitor
- High Resolution Display
- Eco-Friendly LED Solution
- 3D Comb-Filter & De-Interlace
- Slim and lightweight Design
- Multi-adjustable Desktop Stand

**ALL INCLUSIVE:**  
 Desktop Stand  
 LED Backlight  
 All common video inputs

## Monitor Comparison Table

|                             |   | MLW-3225C  | MLW-3225C-3D  | MLW-2422C  | MLW-2425C   | MLW-2623C-DC  | MLW-2626C-DC  | MLM-1581CH   | MLW-2150HD  |
|-----------------------------|---|--|---|--|---|---|---|--|---|
| <b>LCD Diagonal Size</b>    |   | 32-inch 698 mm (H) x 393 mm (V)  | 32-inch 698 mm (H) x 393 mm (V)   | 24-inch 518 mm (H) x 324 mm (V)  | 24-inch 518 mm (H) x 324 mm (V)   | 26-inch 576 mm (H) x 324 mm (V)                             | 26-inch 576 mm (H) x 324 mm (V)                             | 15-inch 304 mm (H) x 228 mm (V)                      | 21.5-inch 476.64 mm (H) x 268.11 mm (V)             |
| <b>Pixels</b>               |   | 1920 (H) x 1080 (V) FHD  | 1920 (H) x 1080 (V) FHD   | 1920 (H) x 1200 (V) 16:10  | 1920 (H) x 1200 (V) 16:10   | 1920 (H) x 1080 (V) FHD                                     | 1920 (H) x 1080 (V) FHD                                     | 1024 (H) x 768 (V) FHD                               | 1920 (H) x 1080 (V) 16:9                            |
| <b>Brightness</b>           |   | 500 cd / m <sup>2</sup>  | 200 cd / m <sup>2</sup>   | 400 cd / m <sup>2</sup>  | 400 cd / m <sup>2</sup>   | 450 cd / m <sup>2</sup>                                     | 450 cd / m <sup>2</sup>                                     | 400 cd / m <sup>2</sup>                              | 250 cd / m <sup>2</sup>                             |
| <b>Contrast Ratio</b>       |   | 1300:1   | 1300:1  | 1000:1   | 1000:1  | 1400:1  | 1400:1  | 500:1  | 1000:1  |
| <b>View Angle</b>           |   | 178°   | 178°  | 178°   | 178°  | 178°  | 178°  | 178°   | 170°  |
| <b>3D effect</b>            |   | N / A  | Passive 3D (Line-by-Line) with Xpol Polarization Filter                               | N / A  | N / A   | N / A   | N / A   | N / A  | N / A   |
| <b>Input Video Signal</b>   | <b>3D</b>   | N / A  | 2 ch (BNC incl. looping out)  | N / A  | N / A   | N / A   | N / A   | N / A  | N / A   |
|                             | <b>3G / HD-SDI</b>  | 1 ch (BNC incl. looping out), 1.5G   | 1 ch (BNC incl. looping out), 1.5G  | N / A  | 1 ch (BNC incl. looping out), 1.5G  | 1 ch Multi-SDI(1.5G, 3G) input available as option: M-MSDI3 | 2 ch Multi-SDI (1.5G, 3G)                                   | N / A  | 1 ch (BNC incl. looping out), 1.5G, 3G              |
|                             | <b>DVI-D</b>  | 1 ch (DVI-D)<br>*2nd input available as option: M-RGB3   | 1 ch (DVI-D)<br>*2nd input available as option: M-RGB3                                | 1 ch (DVI-D)   | 1 ch (DVI-D)<br>*2nd input available as option: M-RGB3                                | 1 ch (DVI-D)  | 2 ch (DVI-D)  | 1 ch (DVI-D)   | 1 ch (DVI-D)  |
|                             | <b>HDMI</b>   | N / A  | N / A   | N / A  | N / A   | N / A   | N / A   | N / A  | 1 ch  |
|                             | <b>Composite, Y/C</b>   | 1 ch (BNC, Y/C incl. looping out), NTSC/PAL  | 1 ch (BNC, Y/C incl. looping out), NTSC/PAL   | 1 ch (BNC, Y/C incl. looping out), NTSC/PAL  | 1 ch (BNC, Y/C incl. looping out), NTSC/PAL   | 1 ch Multi-SDI input available as option: M-MSDI3           | 1 ch (BNC, Y/C incl. looping out), NTSC/PAL                 | 1 ch (BNC, Y/C incl. looping out), NTSC/PAL          | 1 ch (BNC incl. looping out), NTSC/PAL              |
|                             | <b>Analogue Component</b>   | 1 ch (BNC incl. looping out), RGB/Y, Pb, Pr<br>*2nd input available as option: M-RGB3          | 1 ch (BNC incl. looping out), RGB/Y, Pb, Pr<br>*2nd input available as option: M-RGB3 | 1 ch (BNC incl. looping out), RGB/Y, Pb, Pr  | 1 ch (BNC incl. looping out), RGB/Y, Pb, Pr<br>*2nd input available as option: M-RGB3 | N / A   | 1 ch (BNC incl. looping out)                                | 1 ch (BNC incl. looping out), RGB/Y, Pb, Pr          | N / A   |
| <b>PC</b>                   | 1 ch (D-Sub 15 pin), Analogue R, G, B (VGA to WUXGA)*2nd input available as option: -RGB3 | 1 ch (D-Sub 15 pin), Analogue R, G, B (VGA to WUXGA)<br>*2nd input available as option: M-RGB3 | 1 ch (D-Sub 15 pin), Analogue R, G, B (VGA to WUXGA)                                  | 1 ch (D-Sub 15 pin), Analogue R, G, B (VGA to WUXGA)<br>*2nd input available as option: M-RGB3 | 1 ch (D-Sub 15 pin), Analogue R, G, B (VGA to WUXGA)                                  | 1 ch (D-Sub 15 pin), Analogue R, G, B (VGA to WUXGA)        | 1 ch (D-Sub 15 pin), Analogue R, G, B                       | 1 ch (D-Sub 15 pin), Analogue R, G, B (VGA to WUXGA) |   |
| <b>Multi Input</b>          |   | Picture-in-Picture, Side-by-Side   | Picture-in-Picture, Side-by-Side  | N / A  | Picture-in-Picture, Side-by-Side  | N / A   | Picture-in-Picture, Side-by-Side, Swap Display is available | N / A  | N / A   |
| <b>Video Process Engine</b> |   | 10-Bit   | Side-by-Side  | 10-Bit   | 10-Bit  | 10-Bit  | 10-Bit  | 10-Bit   | 10-Bit  |
| <b>Colour Space</b>         |   | 72 % (of NTSC)   | 72% (of NTSC)   | 102 % (of NTSC)  | 102 % (of NTSC)   | 72 % (of NTSC)  | 72 % (of NTSC)  | 72 % (of NTSC)                                       | 72 % (of NTSC)                                      |
| <b>Colour Gradinet</b>      |   | 10-Bit (1 Billion colours)   | 10-Bit (1 Billion colours)  | 10-Bit (1 Billion colours)   | 10-Bit (1 Billion colours)  | 10-Bit x 3 (1.06 Billion colours)                           | 10-Bit x 3 (1.06 Billion colours)                           | 8-Bit (16,7 Million colours)                         | 8-Bit (16.7 Million colours)                        |
| <b>Power Requirement</b>    |   | AC 100 - 120V, 200 - 240V ± 10 % 50/60Hz   | AC 100 - 120V, 200 - 240V ± 10 % 50/60Hz  | AC 100 - 120V, 200 - 240V ± 10 % 50/60Hz   | AC 100 - 120V, 200 - 240V ± 10 % 50/60Hz  | DC24V / 3.3A  | DC24V / 3.3A  | AC 100 - 120V, 200 - 240V ± 10 % 50/60Hz             | AC Adaptor AC 100 - 120V, 200 - 240V ± 10 % 50/60Hz |
| <b>Weight / Dimensions</b>  |   | Approx. 13 kg / W 780 x H 493 x D 117,5 mm   | Approx. 13 kg / W 780 x H 493 x D 117,5 mm  | Approx. 7.2 kg / W 583 x H 442 x D 109 mm  | Approx. 7.4 kg / W 583 x H 442 x D 109 mm   | Approx. 8 kg / W 640 x H 418 x D 82 mm                      | Approx. 8 kg / W 640 x H 418 x D 82 mm                      | Approx. 6 kg / W 366 x H 320 x D 102 mm              | Approx. 4.35 kg / W 515 x H 390 x D 182 mm          |

# ACCESSORIES

Optional: IP Encoder Board | Recorder Board | RGB Input Module | SDI Input Module | Desktop Stand

IP Encoder Board



OPTIONAL IP ENCODER BOARD FOR MKC-210HD | MKC-310HD

Recorder Board



OPTIONAL RECORDER BOARD FOR MKC-210HD | MKC-310HD

M-RGB3



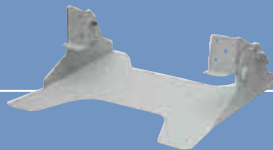
2<sup>nd</sup> RGB INPUT BOARD for MLW-3225C | MLW-2425 (DVI INPUT x1, RGB INPUT x1)

M-MSDI3



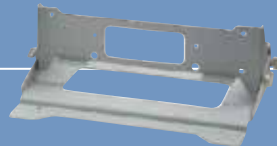
Optional 3G MULTI SDI BOARD for MLW-2623C (DVI INPUT x1, RGB INPUT x1)

TS-261



DESKTOP STAND for MLW-2422C | MLW-2425C | MLW-2622C | MLW-2625C

TS-321



DESKTOP STAND for MLW-3225C